



GeoFarmSA

Integrating intelligence

Smart farming • Satellite imagery • Ground sensors
Crop yield estimation • Science • Data management



Introduction

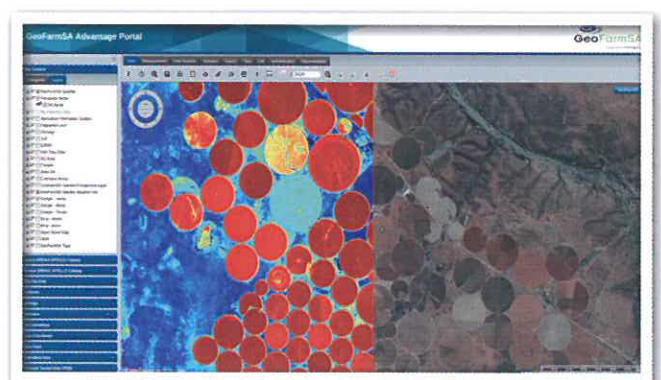
GeofarmSA is a company focused on providing farmers with the necessary tools and solutions to improve production and maximize yield. Our products include an online portal where farmers can view, analyze and disseminate data and ultimately be able to use it as a decision-making tool. This is a proactive way to ensure production is optimal. We combine satellite data and ground sensor data which when combined is as accurate and reliable as possible. Our focus on science makes our product the most credible online data portal on the market. Algorithms developed specifically for South African crops and conditions makes crop identification and crop yield estimation possible.

What makes us unique?

GeoFarmSA realizes that to offer a quality product of this nature is not only a software development task, but that just as much emphasis must be placed on the science behind precision agriculture. By comparing satellite imagery with harvester data, we have developed custom algorithms for South African conditions which will increase the reliability and accuracy of data.

Custom vegetation indexes for different SA crops are being developed and when extrapolated over the entire SA can give the number of different crops currently planted, their condition, and yield.

Using satellite imagery in isolation is problematic and many products on the market currently make this mistake. Therefore, at GeoFarmSA satellite imagery is measured against ground-based data so that it can be accurately calibrated.



Real time crop monitoring, yield prediction and crop identification



For more information contact
Tel +27(0)12 348 4586
Fax +27(0)12 348 4588
Email info@geofarmsa.co.za
URL www.geofarmsa.co.za/GeoFarmSA/



integrating intelligence

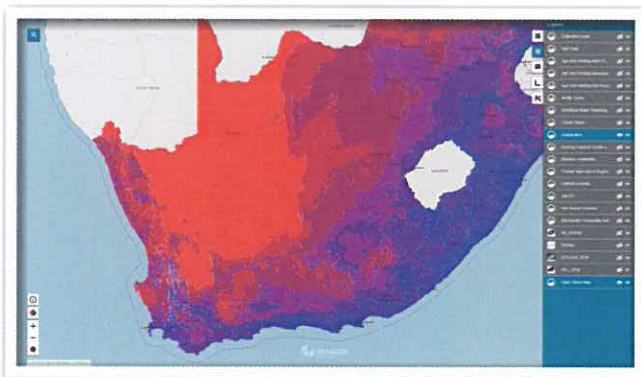
What do we offer?

- Crop yield estimation
- Crop stress analysis
- Weather forecasting
- High resolution satellite imagery
- Personal farming data storage and management including data pertaining to harvesting, fertilizers, energy, irrigation, weather, seeding, livestock, game, infrastructure and more
- Ground sensors, installation and maintenance thereof
- Customized vegetation index algorithms
- Extensive in-house vector library
- Various crop monitoring tools
- Highly scalable systems architecture
- Custom software development
- Local environmental condition monitoring
- Mobile app

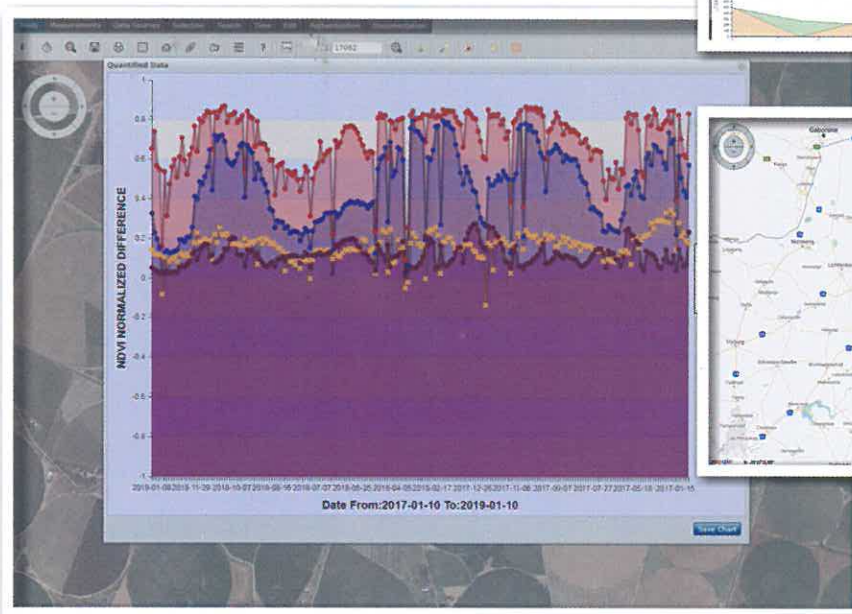
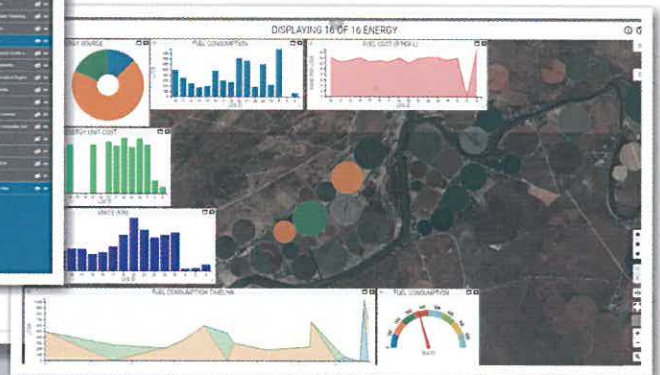
Features and data

- Redlining (Define fields)
- Local print (basic print service)
- Weather tool
- Clip, zip and ship
- ERDAS Apollo catalog
- Spatial analyses
- Swipe Tool
- Shutter tool
- Google Street view Tool
- Sentinel satellite data
- EUMET view (3D),
- Google (terrain, vector etc.), Bing (vector etc.)
- Aerial footage etc.

Mobile application



Interactive dissemination of personal spatial data



Real time weather monitoring

Quantified data to improve credibility and reliability in decision making

- Smart farming
- Satellite imagery
- Ground sensors
- Crop yield estimation
- Science
- Data management